

### APELC offers multiple sizes and styles of coaxial high-voltage quick disconnect cable connectors for voltages up to 500 kV.

Exceptionally rugged and precision machined, the high-voltage quick disconnects are designed to ease management of bulky, heavy duty, high-voltage cables. High-voltage quick disconnects are a standard with APELC Marx Generators and other high-voltage equipment.

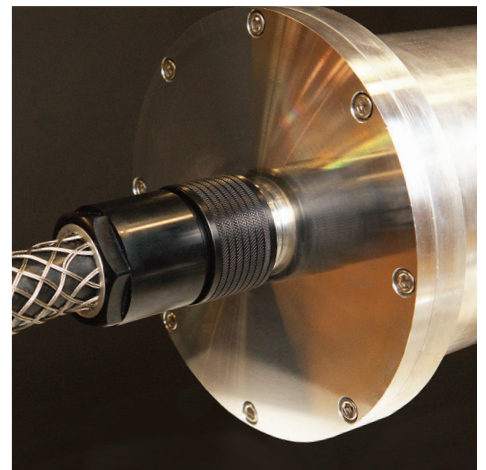
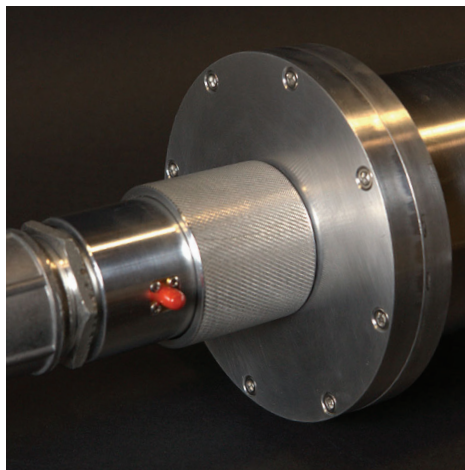
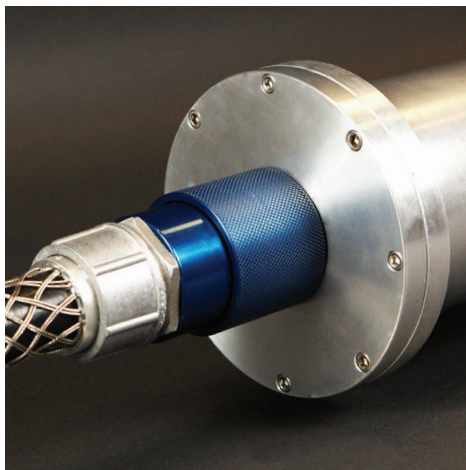
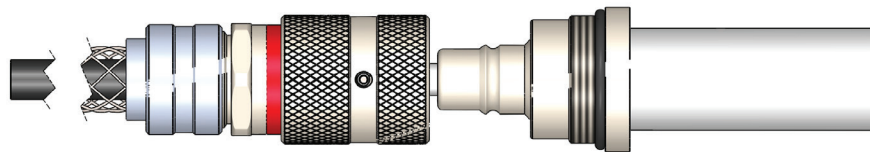
#### Features

- Nickel plated brass or aluminum construction
- Quick disconnect/connect with independent electrical and mechanical connections
- Integrated strain relief
- High conductivity canted spring contacts for ground and center conductor
- Safety options
- High visibility connection indication ring
- Integrated locking set screw
- Max pressure rating of 200psi and oil sealed

CONNECTED



DISCONNECTED



# HIGH-VOLTAGE COAXIAL CONNECTORS

## Assembly & Testing

In addition to supplying custom connectors, APELC provides full assembly and testing, even with connectors from other suppliers, to ensure customers receive a high-quality product that meets exacting requirements.

### We can:

- Terminate the cable to your specifications and applications
- Terminate cables with connectors from another supplier
- Acquire the cable or work with one supplied by the customer
- Provide testing services that include, but are not limited to:
  - High precision length cutting and measurement, within 1 ns of the specified electrical length
  - Hi-pot testing currently up to +80 kV DC
  - Vacuum seal testing for the receptacle side
  - Custom receptacle designs
  - Full testing reporting



Cable Type	DC Rating	Pulse Rating (<100 NS FWHM)	Impedance	Cable OD	Application
RG 213/214	40 KV	80 KV	50 OHMS	.405 Inch	Charge & trigger
DS 2214	75 KV	150 KV	46 OHMS	.650 Inch	Charge & pulse output
DS 2042	230 KV	400 KV	46 OHMS	1.225 Inch	Pulse output
DS 2134	200 KV	400 KV	N/A	.850 Inch	Pulse output
DS 2158*	250 KV	600 KV	41 OHMS	1.52 Inch	Pulse output
DS 2245	25 KV	40 KV	12.5 OHMS	.620 Inch	Trigger & pulse output
DS 2077**	300 KV	500 KV	70 OHMS	1.5 Inch	Pulse output
RG 220	100 KV	300 KV	50 OHMS	1.120 Inch	Charge & pulse output
RG 217	50 KV	100 KV	50 OHMS	.545 Inch	Pulse delivery & High voltage charging
DS 2121	150 KV	300 KV	50 OHMS	.625 Inch	Pulse delivery & High voltage charging

\*DS 2158 cable discontinued from manufacturer. \*\*DS 2077-1 option available

**APELC**  
APPLIED PHYSICAL ELECTRONICS, L.C.